



Like this pattern? Find more at <http://www.innerchildcrochet.com!>

***Difficulty:*** Intermediate for color changes and required artistic ability.

***Materials***

- ❖ Various colors  
worsted weight yarn
- ❖ G/6 - 4.25mm hook
- ❖ Tapestry Needle

***Finished Size:***

approximately 12" square

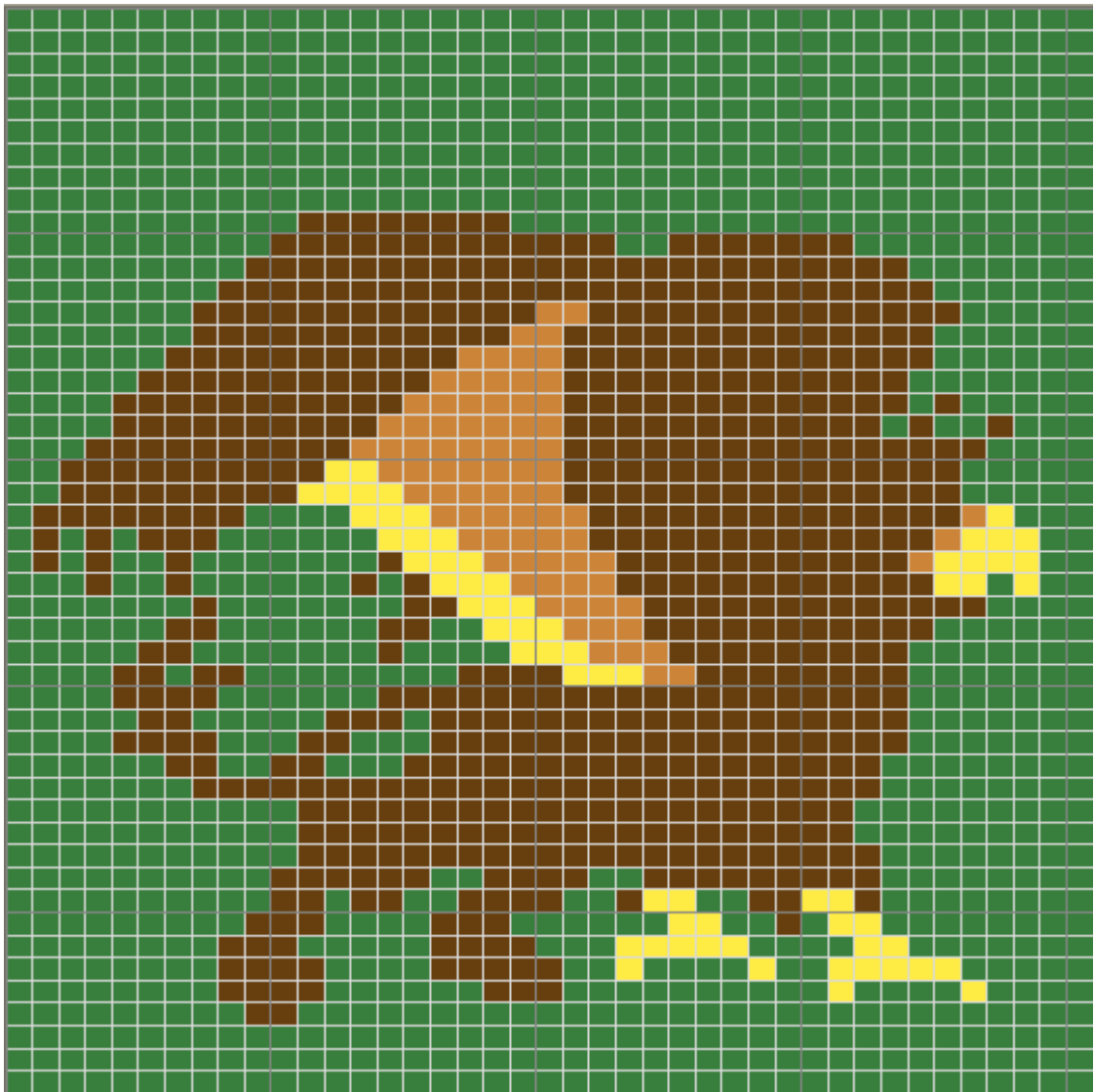
***Gauge:*** 4 rows x 3½ sts = 1"

***Directions***

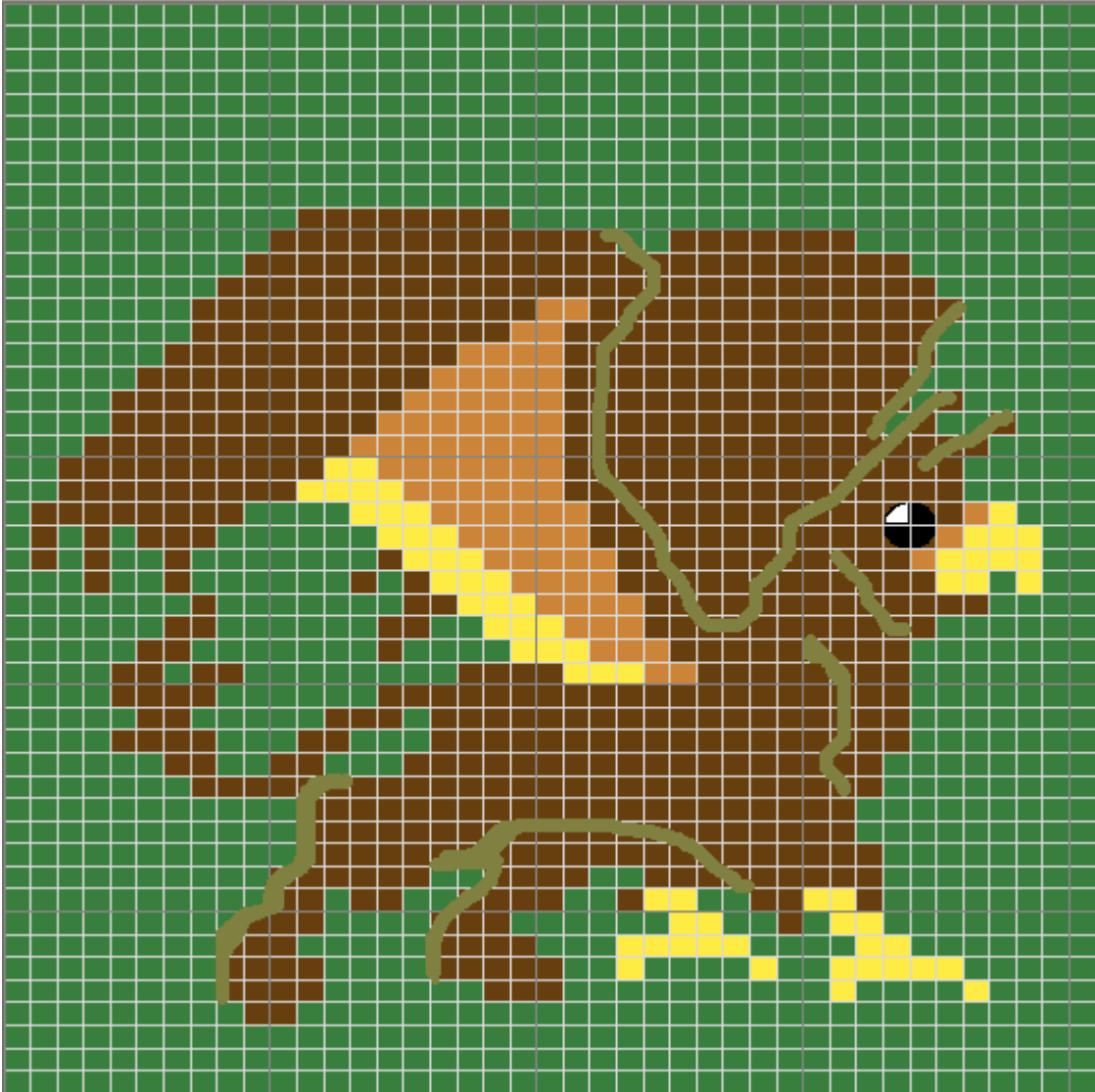
Ch 42, sc in 2nd ch from hook and each ch thereafter.  
Each square on the graph represents a sc.  
Change colors as for chart.



Embroider on details as per second diagram.



Copyright 2005 Melissa Mall. All rights reserved.  
Reproducing or transmitting this pattern by any means for any purpose other than personal use constitutes a violation of copyright law.



Copyright 2005 Melissa Mall. All rights reserved.  
Reproducing or transmitting this pattern by any means for any purpose other than personal use constitutes a violation of copyright law.